

KEY

LAA Outcomes

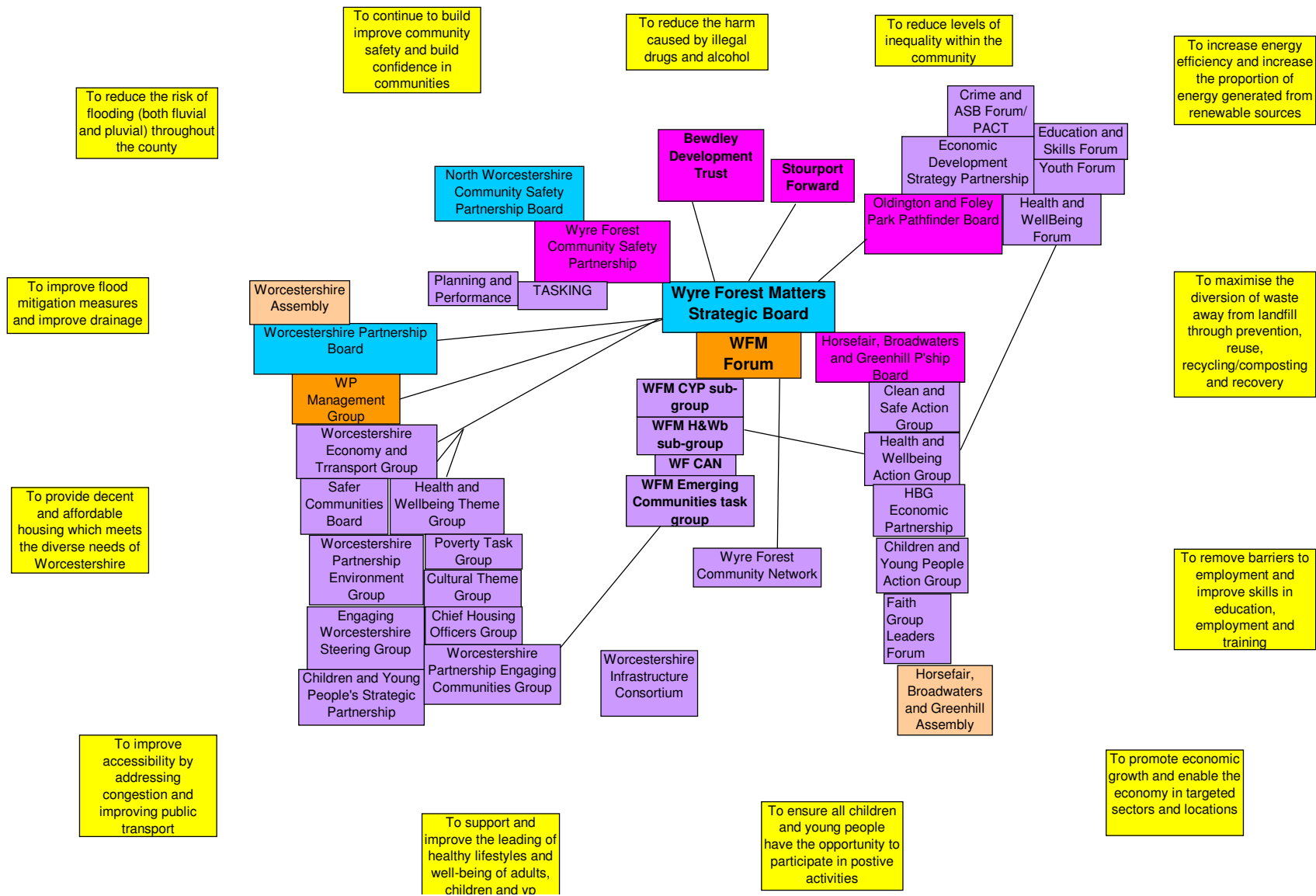
Partnership Board/Highest tier

Partnership Exec/Management Group/Second tier

Wider Partnership Involvement Group - Assemblies

Theme/Action/Working/Reference Groups

Sub-district Partnerships



To reduce the risk of flooding (both fluvial and pluvial) throughout the county

To continue to build improve community safety and build confidence in communities

To reduce the harm caused by illegal drugs and alcohol

To reduce levels of inequality within the community

To increase energy efficiency and increase the proportion of energy generated from renewable sources

To improve flood mitigation measures and improve drainage

To provide decent and affordable housing which meets the diverse needs of Worcestershire

To improve accessibility by addressing congestion and improving public transport

To support and improve the leading of healthy lifestyles and well-being of adults, children and young people

To ensure all children and young people have the opportunity to participate in positive activities

To maximise the diversion of waste away from landfill through prevention, reuse, recycling/composting and recovery

To remove barriers to employment and improve skills in education, employment and training

To promote economic growth and enable the economy in targeted sectors and locations

children and yp

services